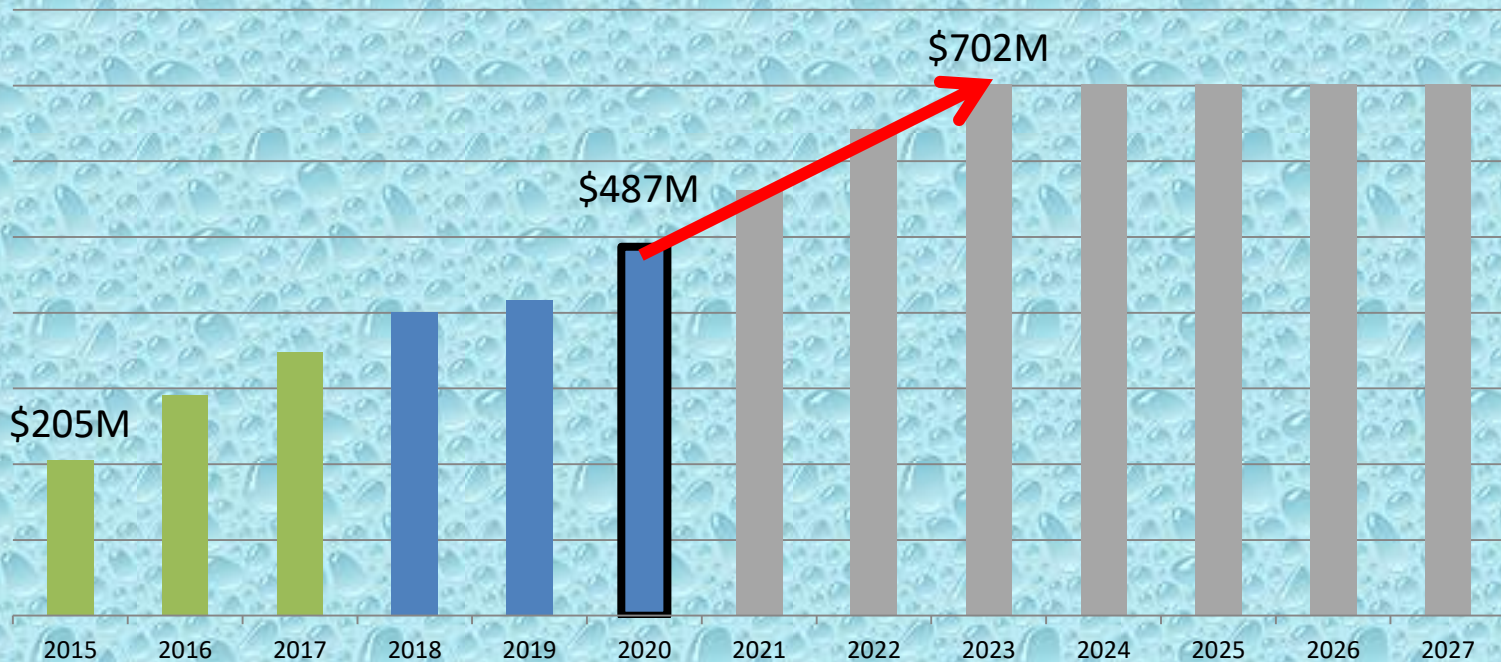


SCAPA Summer Conference 2019

Panel Discussion

Pavement Program

10-year Plan Pavement Funding Levels



2020 Pavement Improvement

**The 2020 Pavement Improvement Program – Part 1
(rehabilitation and reconstruction projects):
Commission approved list going out for public comment**

- Primary @ \$138M, impacting ≈ 245 CL miles
- Federal aid eligible secondary @ \$59.8M, impacting ≈ 148 CL miles
- Non-federal aid secondary @ \$56.3M, impacting ≈ 168 CL miles

2020 Pavement Improvement

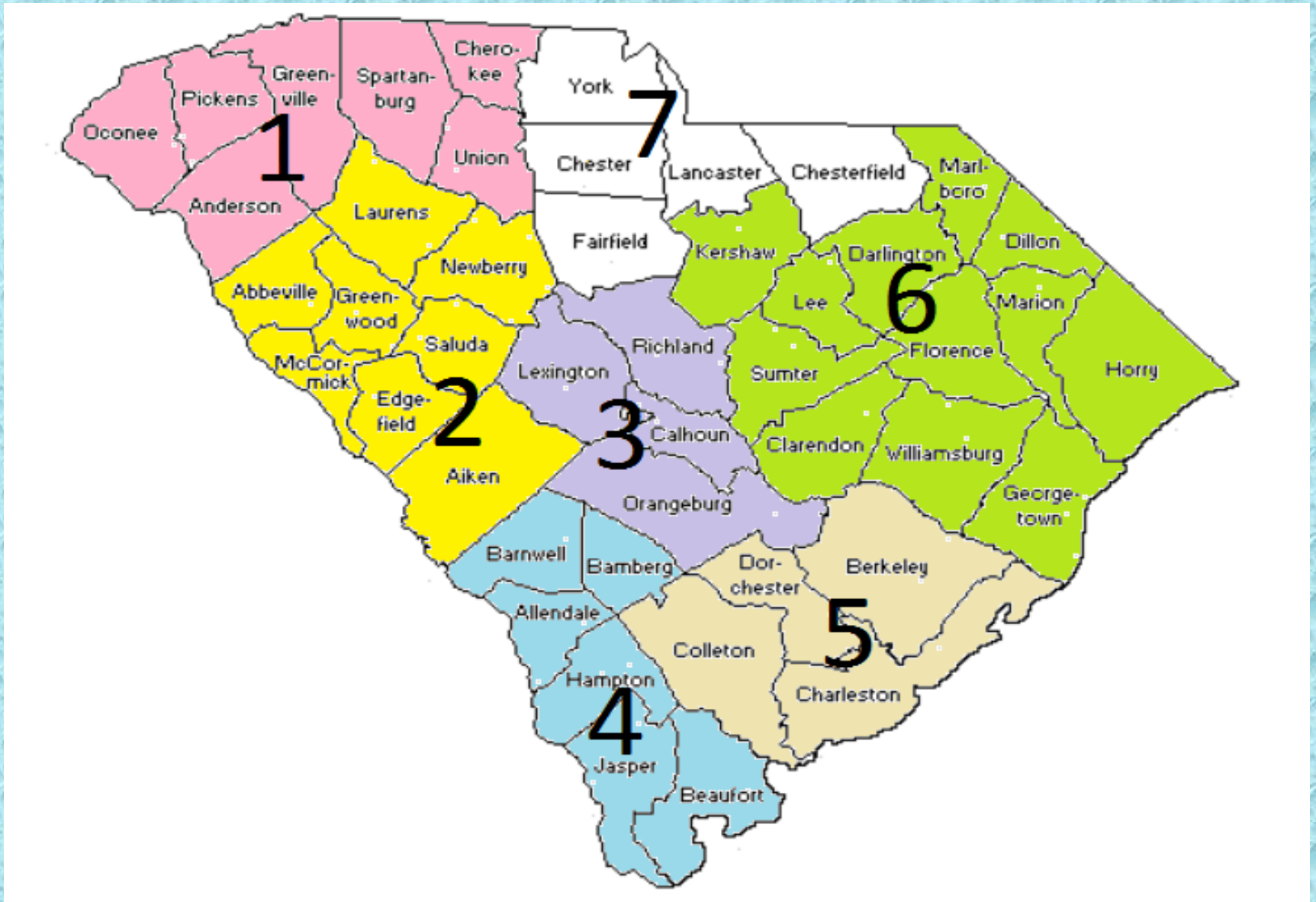
**The 2020 Pavement Improvement Program – Part 2
(rehabilitation and reconstruction projects):**

- Primary @ \$33M
- Federal aid eligible secondary @ \$7.75M
- Non-federal aid secondary @ \$4.89M

Letting Schedule

- Rehabilitation/Reconstruction projects will be let in September, November, January, and March
- Preservation projects will be let as necessary in the interim months (October, December, February)

Asphalt Market Areas



Specification Update

- SC-M-401
- SC-M-405
- Safety Edge – 2019
- OGFC – 2019
- SMA Special Provision

QIC Action Items

Ignition Ovens – Calibration Factors

Removal of 310 forms

- SC-M-400
- SC-M-404
- Performance Based - Balanced Mix Design
- Temporary Mixes

Rideability Update

- Expect working group with QIC to address in 2019
 - Milling
 - SMA or mill and fill interstate work
 - CMRB

SMA Projects

- Approved
 - I-20 Lexington Design Build
 - I-95 32 – 64
- Potential Locations being considered
 - I-95 SB 193-173
 - I-95 193-198 (currently under contract)
 - I-26 187-194

FHWA Trailer

Coming to SC in the Fall 2019

Mobile Asphalt Testing Trailer Program (MATT)



Instrumented Pavement Sections

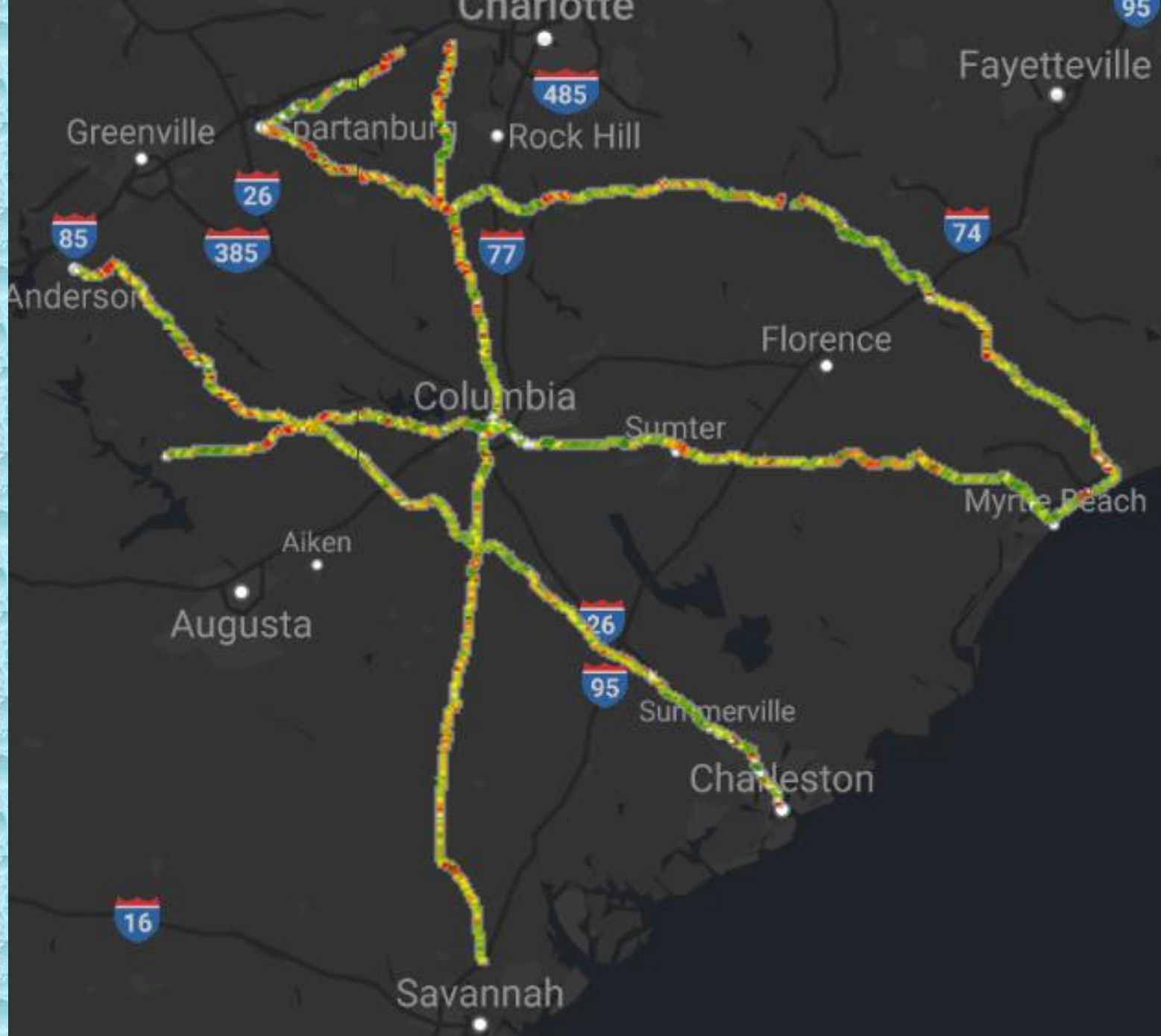
- Volvo Cars Blvd.
 - Designed as a perpetual pavement
 - Instrumented to measure actual stress and strains
 - Hopeful to validate design assumptions for further use by SCDOT
- US 123 Clemson
 - Proposed CIP section
 - Instrumentation to confirm design assumptions and aid in future designs

Ongoing Pavement Research

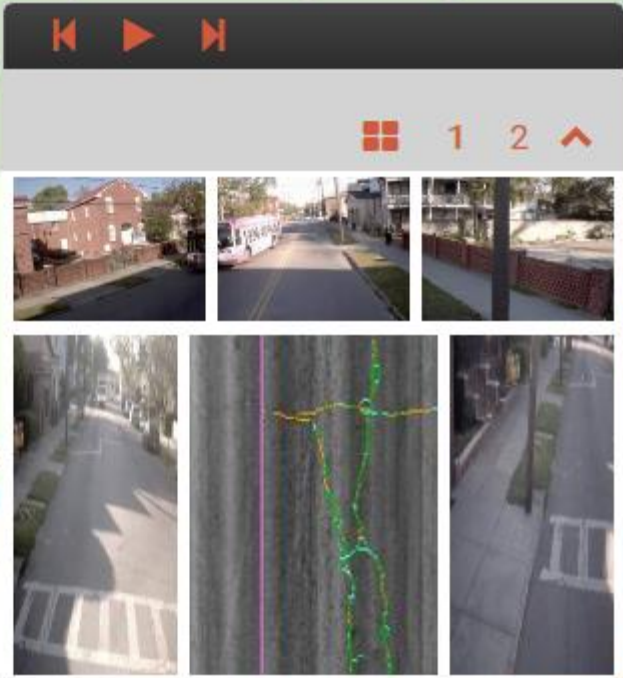
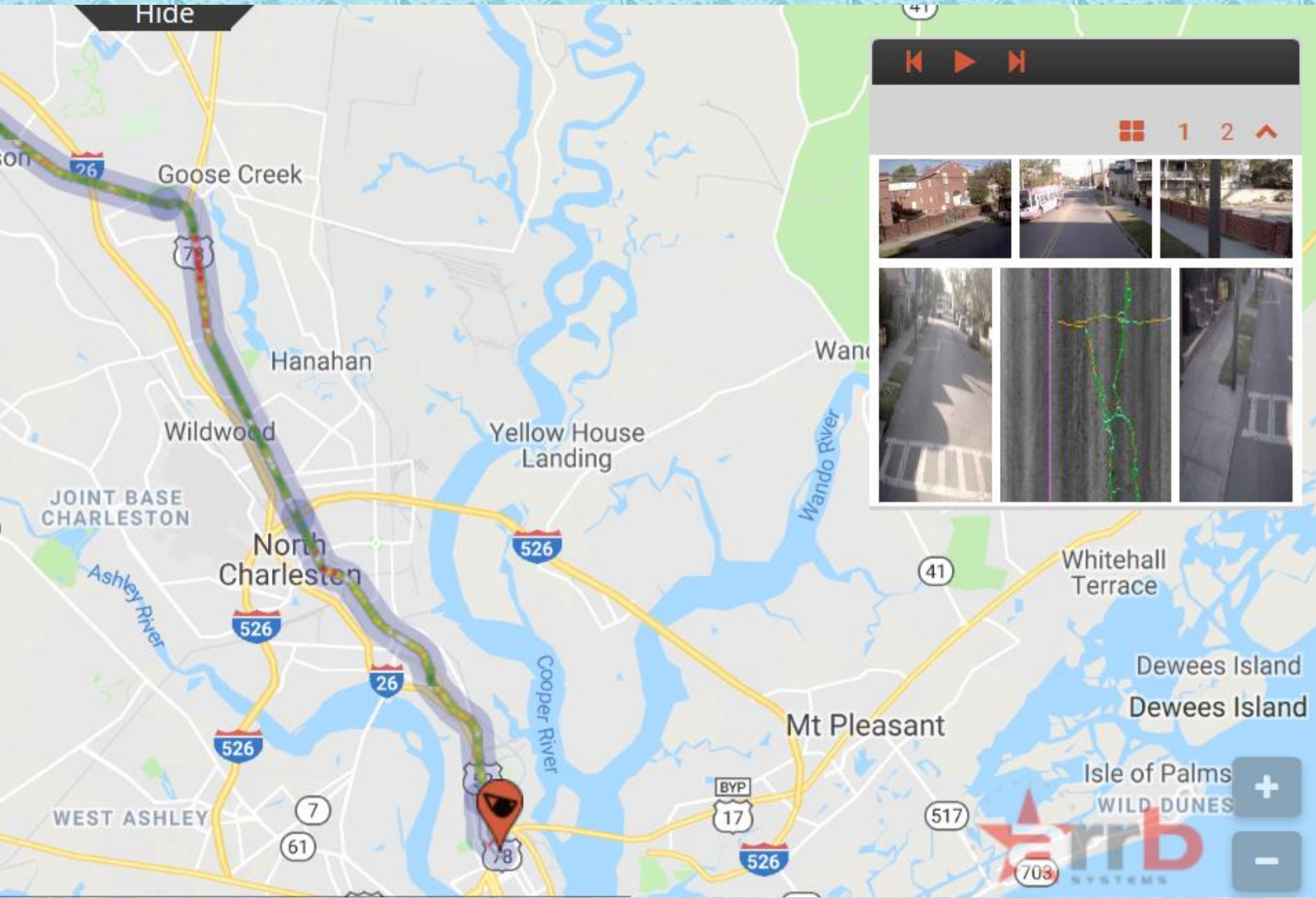
- SPR-743 – Pavement Performance Curves
- SPR 736 – Characterization of Bases and Subbases for PavementME
- SPR 732 – Local Calibration of PavementME Phase II

Ongoing Pavement Research – Cont.

- SPR 735 – Development of Pavement Investigation Strategies for Non-Interstate Routes
- TPF-5 - Pooled fund for TSD on system wide health application
- SPRxxx – Use of TSD for Pavement Management.

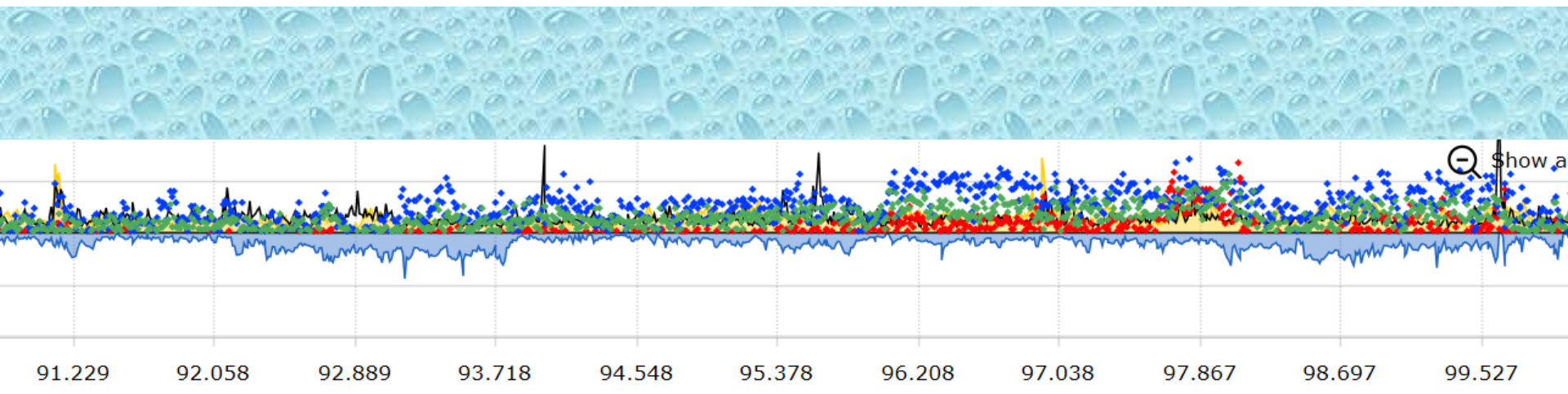
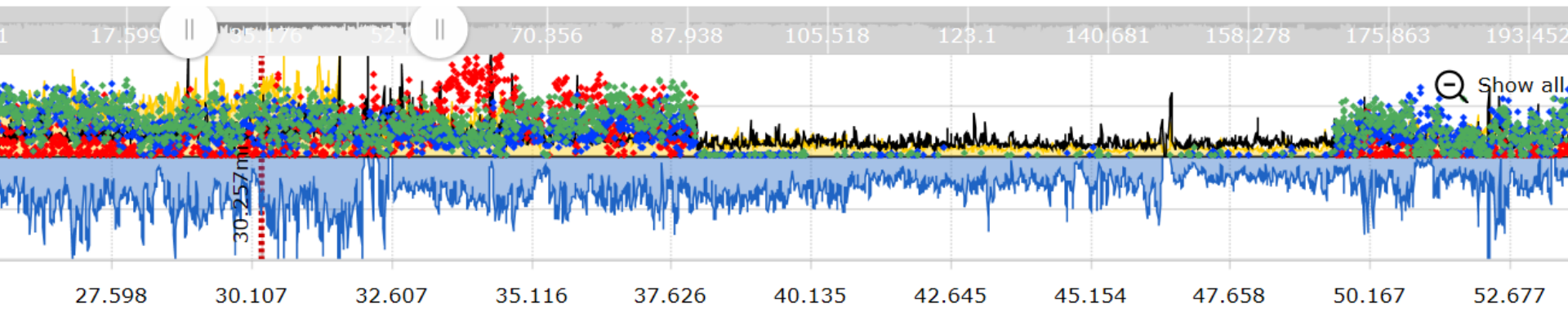
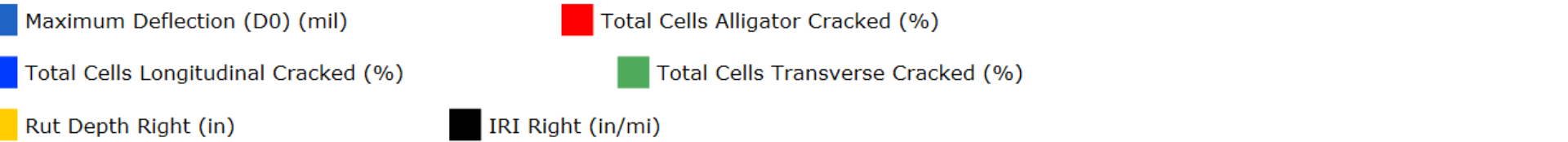


Hide



Available Data Sources

IRI_AVG	IRI Right	IRI Left	IRI Lane
SMTD Left	SPTD Left	SMTD Center	SPTD Center
SMTD Right	SPTD Right	MPD Left	ETD Left
MPD Center	ETD Center	MPD Right	ETD Right
Total Cells Cracked	Total Wheelpath Cells Cracked	Total Cells Alligator Cracked	Total Cells Longitudinal Cracked
Total Cells Transverse Cracked	Rut Depth Right	Rut Depth Left	Rut Depth Lane
Pothole Number	Pothole Average Depth	Pothole Area	Ravelling Index
Ravelling Porosity Index	Ravelling Area	ACD MPD Zone 1	ACD MPD Zone 2
ACD MPD Zone 3	ACD MPD Zone 4	ACD MPD Zone 5	SCI 12 (D0 - D12)
SCI 8 (D0 - D8)	SCI Subgrade (D36 - D60)	Rut Depth Avg	Cross Slope
Grade		Horizontal Curvature	Vertical Curvature



Thank You for the opportunity to share
Information with Industry!

Chris Kelly
Jay Thompson
Cliff Selkinghaus